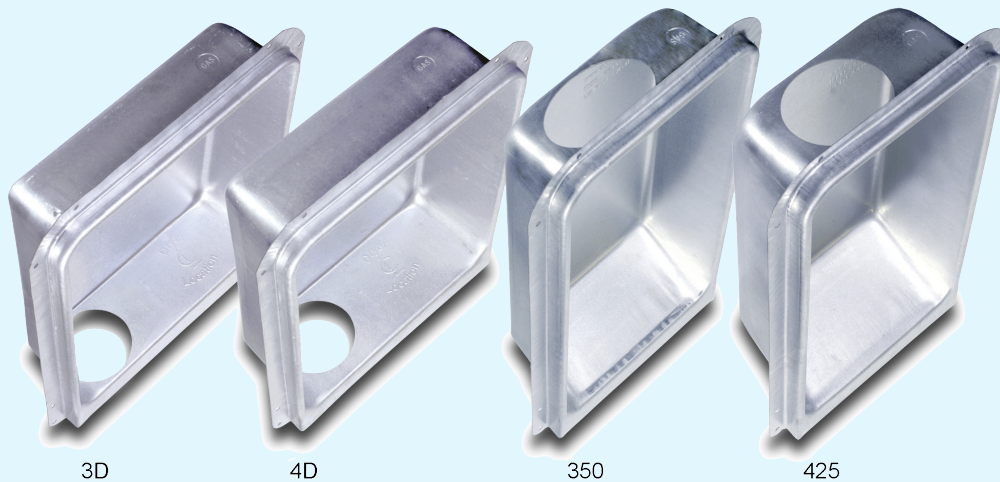




THE DRYERBOX



3D

4D

350

425

Part #
DryerBox Model 3D
DryerBox Model 4D
DryerBox Model 350
DryerBox Model 425

Model 3D <i>(downward)</i>	Model 4D <i>(downward)</i>	Model 350 <i>(upward)</i>	Model 425 <i>(upward)</i>
<ul style="list-style-type: none"> • Lower port 4 7/8" x 3 1/8" oval shape • Distance from nailing flange to rear of box is 3 1/2" • Overall measurements: 19"h x 16 3/4" w x 4 3/8" deep • Inside measures 14" wide x 16" tall • Fits 2 x 4 Wall 	<ul style="list-style-type: none"> • Lower port 4 1/8" with very slight oval shape • Distance from nailing flange to rear of box is 4 1/4" • Overall measurements: 19"h x 16 3/4" w x 5 1/8" deep • Inside measures 14" wide x 16" tall • Fits 2 x 6 Wall 	<ul style="list-style-type: none"> • Top port 4 7/8" x 3 1/8" oval shape • Distance from nailing flange to rear of box is 3 1/2" • Overall measurements: 21"h x 12 1/2" w x 4 3/8" deep • Inside measures 9 1/2" wide x 18 1/4" tall • Fits 2 x 4 Wall 	<ul style="list-style-type: none"> • Lower port 4 1/8" with very slight oval shape • Distance from nailing flange to rear of box is 4 1/4" • Overall measurements: 21"h x 12 1/2" w x 5 1/8" deep • Inside measures 9 1/2" wide x 18 1/4" tall • Fits 2 x 6 Wall

THE DRYER-ELL

28 gauge



90 degree long turn Dryer Elbow—The Dryer-Ell is a re-engineered dryer exhaust fitting that exhibits a larger radius and a smooth interior, providing a net gain of approximately 4.8 feet in allowable duct length when used as a replacement to the standard 4" ell used in the dryer venting trade. 28 Gauge, ships in two pieces to be assembled in the field.

Part #
DryerEll