

INABA DENKO
AMERICA

INTRODUCES

SLIMDUCT™ RD

The attractive solution to gain maximum protection

The **Slimduct RD Commercial Lineset Cover** is the aesthetically pleasing and cost-effective way to enclose and protect exposed rooftop lineset layouts, and the multiple linesets needed for VRV/VRF applications. Easy to install and field configurable to any orientation, Slimduct RD is the labor-saving alternative to custom-fabricated lineset ducting options.

Contact us today

www.InabaDenko-America.com

BENEFITS

DURABILITY

- Fabricated from sheets of high-grade, corrosion-resistant, and hot-dipped galvanized steel, Slimduct RD is coated with zinc, aluminum, and magnesium. This scratch, abrasion and corrosion-resistant coating offers better protection than stainless steel, even in highly corrosive atmospheres such as sea air.

EASY TO ASSEMBLE

- Slimduct RD is engineered to make installation a time-saving process. No special tools are required to assemble and connect the interlocking covers together. Also, only two kinds of screws are needed, and they are included with the product.

MULTIPLE APPLICATIONS

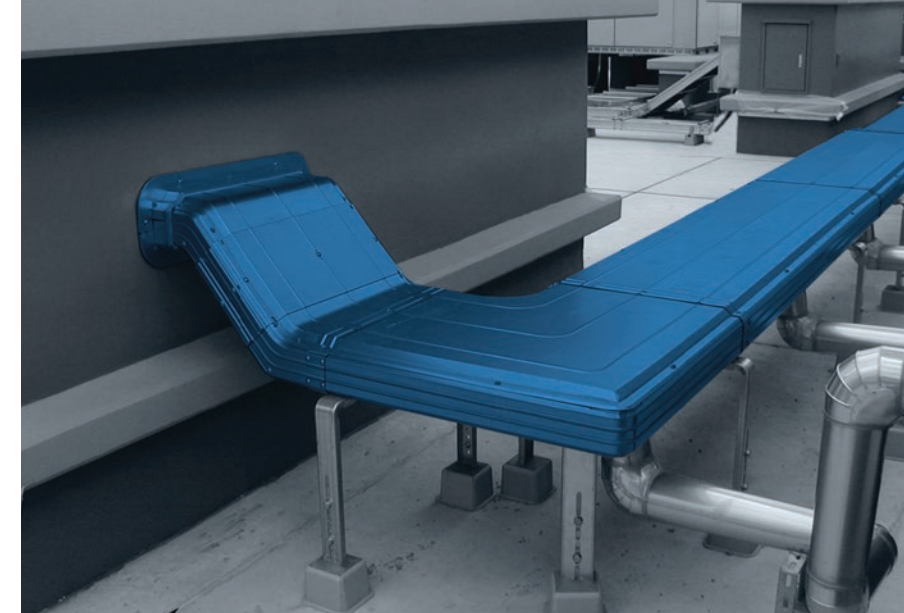
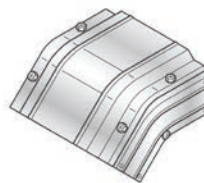
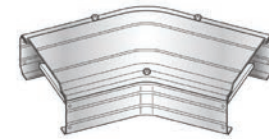
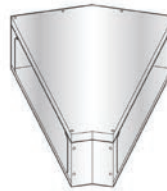
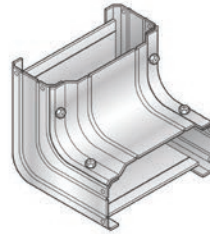
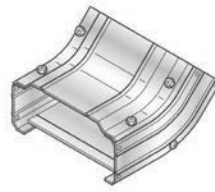
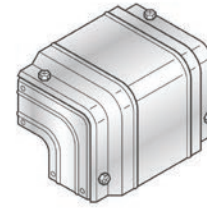
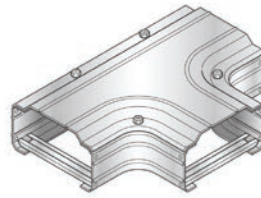
- A wide array of fittings, including risers, vertical mountings, and under-slab mountings, are readily available to easily customize any job on-site during the installation process. Slimduct RD can also be installed in any orientation.

ATTRACTIVENESS

- Slimduct RD encloses the multiple lines used by variable refrigerant flow/volume (VRF/VRV) multi-split systems. Requiring less space than traditional racking/jacketing system, its compact design delivers a clean, professional, and finished look to any rooftop project. It blends in perfectly with any type of commercial building.

LOAD CAPACITY

- Slimduct Walkway Type (RDW) is engineered with an embossed anti-slip surface. This enhances safety and enables maintenance personnel to walk on ducts without risk of damage to ducts or to linesets during routine maintenance.



TECHNICAL SPECIFICATIONS

- Material: Highly corrosion-resistant hot-dip galvanized steel sheet has a coating layer of zinc, 6% aluminum, and 3% magnesium.
- Tensile Strength: More than 274.6N/mm² (=28kgf/mm²) (=39.885psi)
- Salt Tolerance: Salt Resistant
- Stretch: More than 28%